

TECH^{hf}

Vehicle Technology.

[Communication]
[Docking Station]



Dash Mounted Touch Screen Display



Overview

- Maximizes in-vehicle cabin area for driver and passenger, as it is mounted to dash and computing device and docking station are mounted in trunk.
- Innovative and versatile functionality built into the design such as an integrated USB port allowing easy access for software updates to main device.
- Capacitive technology allows Multi-Touch 2 Finger for pinch, zoom, activate.
- Night mode of red monochrome for reduced eye strain, easy toggle back and forth.
- Optimized audio experience with two 2.0W integrated stereo speakers allowing for sound directly from computing device.
- Volume and brightness adjustments to be made right on the actual display
- Power button allows screen to be blacked out for privacy without having to go through a reboot process, and to minimize driver distraction.
- Specifically designed to attach to optional C-DMM-2000 series Dash Monitor Mounts, allowing for Rapid ergonomic articulation adjustments by the driver or passenger allowing for a full range of motion to maintain good posture, minimize strain, and reducing glare.
- Touch Screen display can also be attached to any mount with VESA 75 hole pattern.



Display Specification

Screen Size	11.6" diagonal (16:9)
Resolution	1366 x 768
Dimensions	11.6" (L) x 8.5" (D) x 1.4" (H)
Colour	Black
Weight	2.2 lbs.
Brightness	800 nits, 20 levels of adjustment
Warranty	12 Months

Mounting

- 2015–2016 Chevrolet Tahoe PPV
- 2015 Dodge Charger Pursuit
- 2013–2016 Ford Interceptor Police Utility



- 2013–2016 Ford Interceptor Police Sedan
- 2016 Ford F150
- 2016 Ford Transit
- 2016 Ford F250–750 (coming soon)

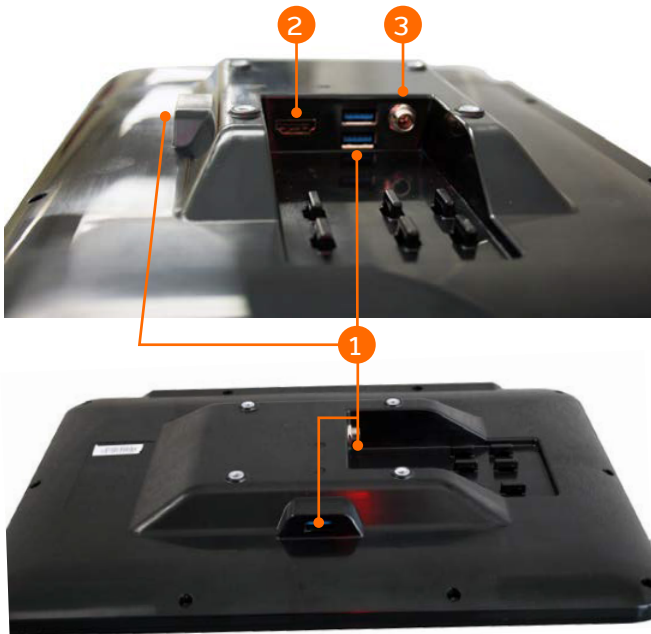
Dash Mounted Touch Screen Display

Features

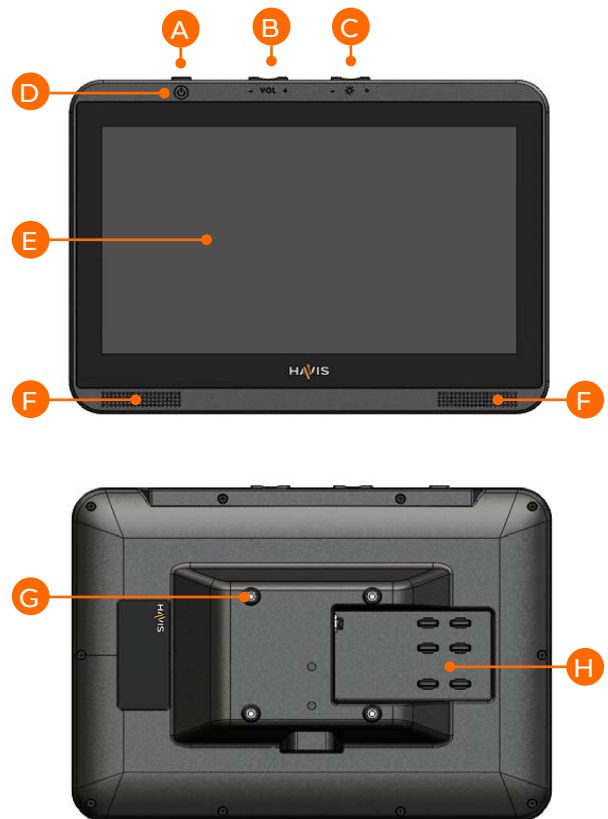
- 1 3 x USB 3.0 (x3)
- 2 HDMI 1.3
- 3 Power Input 11–16 V DC

Specification

Power Supply	11–16 VDC Input 12 VDC Output
OS Language	Windows Win7 & Win8 (tested)
Dimensions	11.6" (L) x 8.5" (D) x 1.4" (H)
Operating Temperature	-21°C to 60°C (-6°F to 140°F)
Weight	2.2 lbs.



- A Power Button
- B Volume Control (- and +)
- C Brightness Control (- and +)
- D Power Indicator
- E Screen Size: 11.6" diagonal (16:9), Resolution: 1366 x 768, Brightness: 800 nits, 20 levels of adjustment
- F Two 2.0W stereo speakers
- G VESA 75 Mounting (4x M4 thread)
Embedded mounting hardware built into chassis
Mount screen landscape or portrait mode
- H Strain Relief Anchor Points



Certifications & Testing

- Vibration Testing: MIL-STD 810G 514.5
- Impact Test: Crash Simulation per SAE J1455 (Forward/Rearward/Side Impact Directions)
- Environmental Testing: Hot/Cold Operation and Storage CE, FCC